

Natural changes of population 1961 – 2022

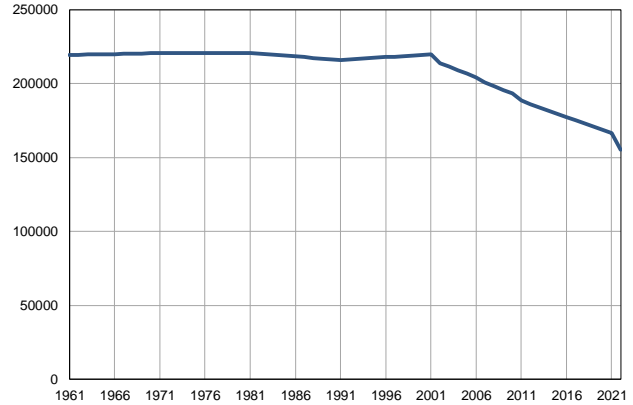
Profile
July 2023

West Bačka

	1961	2022
Population size	219331	155104
Livebirths, Number	3824	1357
Deaths, Number	1971	3117
Natural increase, Number	1853	-1760
Infants deaths, Number	314	6
Livebirths, per 1,000 population	17	9
Deaths, per 1,000 population	9	20
Natural increase, per 1,000 population	8	-11
Infants deaths, per 1,000 livebirths	82	4

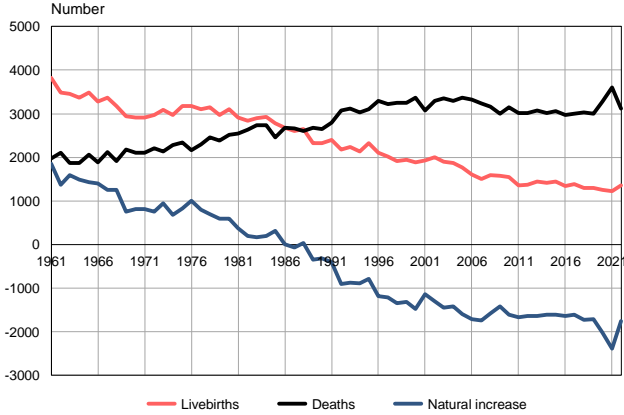
Source: Vital Statistics, SORS

Population size, 1961–2022



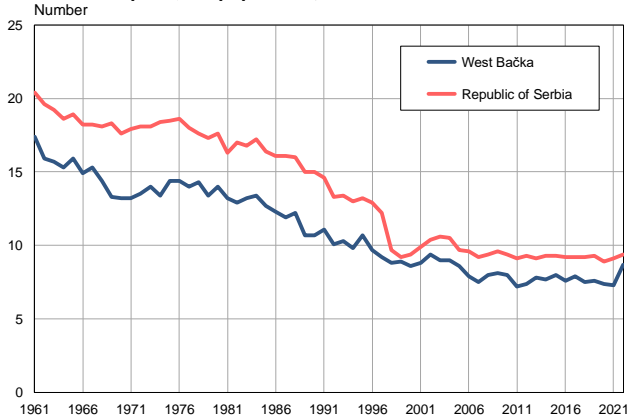
Source: Vital Statistics, SORS

Livebirths, deaths and natural increase, 1961–2022



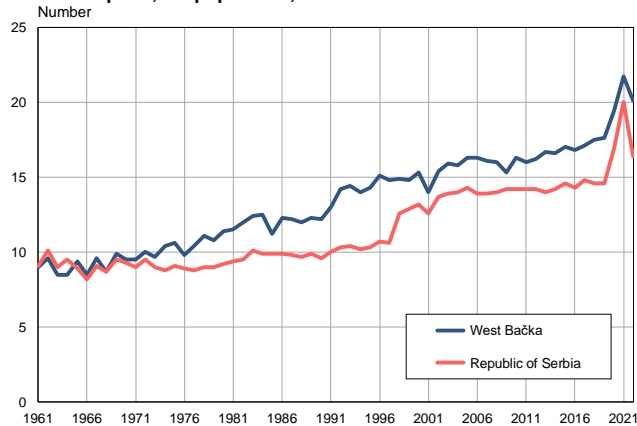
Source: Vital Statistics, SORS

Livebirths per 1,000 population, 1961–2022



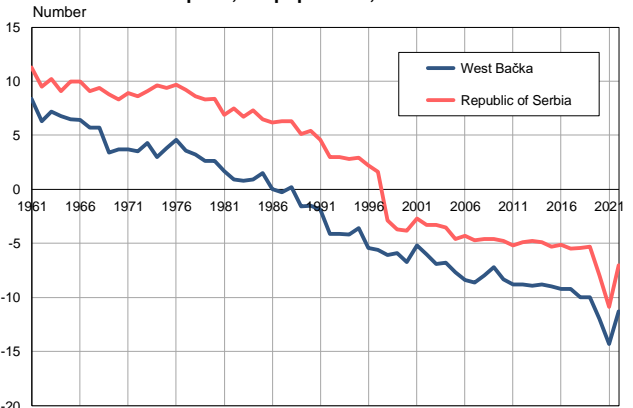
Source: Vital Statistics, SORS

Deaths per 1,000 population, 1961–2022



Source: Vital Statistics, SORS

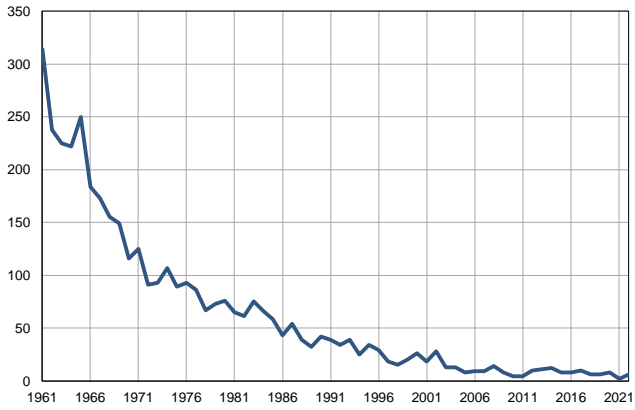
Natural increase per 1,000 population, 1961–2022



Source: Vital Statistics, SORS

Infants deaths, 1961–2022

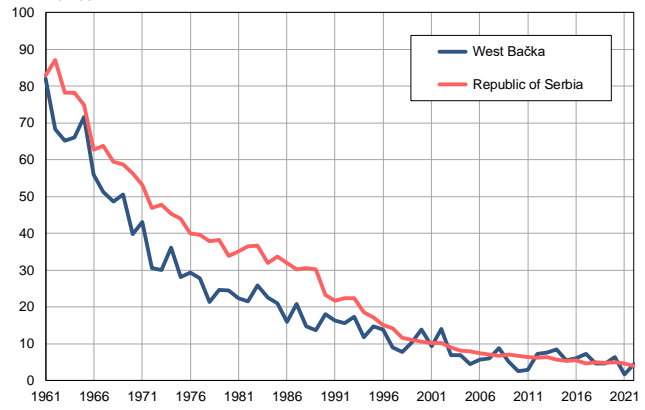
Number



Source: Vital Statistics, SORS

Infants deaths per 1,000 livebirths, 1961–2022

Number



Source: Vital Statistics, SORS

Table. Natural changes of population, West Bačka

Year	Number of population	Livebirths	Deaths	Natural increase	Infants deaths	per 1000 population			Infant deaths per 1000 livebirths
						Livebirths	Deaths	Natural increase	
1961	219331	3824	1971	1853	314	17.4	9.0	8.4	82.1
1962	219465	3484	2112	1372	238	15.9	9.6	6.3	68.3
1963	219599	3453	1863	1590	225	15.7	8.5	7.2	65.2
1964	219733	3361	1870	1491	222	15.3	8.5	6.8	66.1
1965	219867	3486	2063	1423	250	15.9	9.4	6.5	71.7
1966	220001	3284	1879	1405	184	14.9	8.5	6.4	56.0
1967	220135	3372	2123	1249	173	15.3	9.6	5.7	51.3
1968	220269	3180	1920	1260	155	14.4	8.7	5.7	48.7
1969	220403	2942	2185	757	149	13.3	9.9	3.4	50.6
1970	220537	2917	2098	819	116	13.2	9.5	3.7	39.8
1971	220671	2910	2102	808	125	13.2	9.5	3.7	43.0
1972	220692	2972	2210	762	91	13.5	10.0	3.5	30.6
1973	220712	3088	2139	949	93	14.0	9.7	4.3	30.1
1974	220733	2966	2287	679	107	13.4	10.4	3.0	36.1
1975	220753	3170	2345	825	89	14.4	10.6	3.8	28.1
1976	220774	3175	2168	1007	93	14.4	9.8	4.6	29.3
1977	220794	3097	2302	795	86	14.0	10.4	3.6	27.8
1978	220815	3151	2458	693	67	14.3	11.1	3.2	21.3
1979	220835	2970	2377	593	73	13.4	10.8	2.6	24.6
1980	220856	3100	2510	590	76	14.0	11.4	2.6	24.5
1981	220876	2917	2545	372	65	13.2	11.5	1.7	22.3
1982	220380	2835	2638	197	61	12.9	12.0	0.9	21.5
1983	219884	2895	2731	164	75	13.2	12.4	0.8	25.9
1984	219388	2933	2732	201	66	13.4	12.5	0.9	22.5
1985	218892	2774	2455	319	58	12.7	11.2	1.5	20.9
1986	218396	2683	2676	7	43	12.3	12.3	0.0	16.0
1987	217900	2597	2666	-69	54	11.9	12.2	-0.3	20.8
1988	217404	2648	2609	39	39	12.2	12.0	0.2	14.7
1989	216908	2329	2676	-347	32	10.7	12.3	-1.6	13.7
1990	216412	2325	2645	-320	42	10.7	12.2	-1.5	18.1
1991	215916	2395	2802	-407	39	11.1	13.0	-1.9	16.3
1992	216305	2183	3080	-897	34	10.1	14.2	-4.1	15.6
1993	216694	2238	3116	-878	39	10.3	14.4	-4.1	17.4
1994	217083	2135	3029	-894	25	9.8	14.0	-4.2	11.7
1995	217472	2320	3101	-781	34	10.7	14.3	-3.6	14.7
1996	217861	2106	3290	-1184	29	9.7	15.1	-5.4	13.8
1997	218251	2017	3224	-1207	18	9.2	14.8	-5.6	8.9
1998	218640	1916	3254	-1338	15	8.8	14.9	-6.1	7.8
1999	219029	1939	3252	-1313	20	8.9	14.8	-5.9	10.3
2000	219418	1890	3365	-1475	26	8.6	15.3	-6.7	13.8
2001	219807	1931	3076	-1145	18	8.8	14.0	-5.2	9.3
2002	213524	2000	3295	-1295	28	9.4	15.4	-6.0	14.0
2003	211394	1905	3351	-1446	13	9.0	15.9	-6.9	6.8
2004	209057	1875	3298	-1423	13	9.0	15.8	-6.8	6.9
2005	206623	1770	3367	-1597	8	8.6	16.3	-7.7	4.5

Table. Natural changes of population, West Bačka

Year	Number of population	Livebirths	Deaths	Natural increase	Infants deaths	per 1000 population			Infant deaths per 1000 livebirths
						Livebirths	Deaths	Natural increase	
2006	203985	1613	3319	-1706	9	7.9	16.3	-8.4	5.6
2007	200951	1500	3241	-1741	9	7.5	16.1	-8.6	6.0
2008	197974	1589	3167	-1578	14	8.0	16.0	-8.0	8.8
2009	195573	1582	2995	-1413	8	8.1	15.3	-7.2	5.1
2010	193331	1541	3143	-1602	4	8.0	16.3	-8.3	2.6
2011	188447	1359	3021	-1662	4	7.2	16.0	-8.8	2.9
2012	186188	1375	3018	-1643	10	7.4	16.2	-8.8	7.3
2013	183967	1440	3078	-1638	11	7.8	16.7	-8.9	7.6
2014	181780	1408	3014	-1606	12	7.7	16.6	-8.8	8.5
2015	179639	1445	3057	-1612	8	8.0	17.0	-9.0	5.5
2016	177476	1342	2978	-1636	8	7.6	16.8	-9.2	6.0
2017	175347	1392	3001	-1609	10	7.9	17.1	-9.2	7.2
2018	173213	1295	3027	-1732	6	7.5	17.5	-10.0	4.6
2019	171054	1293	3006	-1713	6	7.6	17.6	-10.0	4.6
2020	168841	1253	3273	-2020	8	7.4	19.4	-12.0	6.4
2021	166395	1220	3606	-2386	2	7.3	21.7	-14.3	1.6
2022	155104	1357	3117	-1760	6	8.7	20.1	-11.3	4.4

Source: Vital Statistics, SORS

Definitions

Population size

Number of population in the respective year. The data on the number of population in 1961, 1971, 1981 and 1991 are census data, while for the inter-census years the number of population was calculated as an average inter-census difference. From 2002 are given the population estimates that were calculated according to the census of population results and the annual statistics of natural mechanical population movements.

Livebirths

Absolute number of live births in the course of a year. Live born child means a child giving vital signs after birth (breathing, i.e. heartbeat), even for the shortest time, regardless the mother's pregnancy duration.

Deaths

Absolute number of deaths in the course of a year. Deceased is a person that whenever after having been born live, shows permanently stopped vital signs.

Natural increase

Natural population increase is the number of live births minus the number of deaths.

Infants deaths

Absolute number of infants deaths in the course of a year. Deceased infant is a child that after having been born live and before aged one year, shows permanently stopped vital signs.

Livebirths, per 1 000 population

Livebirths rate is the ratio of the number of live births and the population size in the respective year. The number of live births is divided by the population size and then multiplied by 1000.

Deaths, per 1 000 population

General mortality rate represents the ratio between the number of deaths and the population size in the respective year. The number of deaths is divided by population size and then multiplied by 1000.

Natural increase, per 1 000 population

Natural population increase rate is the difference between the number of live births and the number of deaths, in relation to the population size in the respective year.

Natural population increase rate = (number of live births - number of deaths) / population size * 1000

Infants deaths, per 1 000 livebirths

Infant mortality rate is the ratio of deceased children under 1 year of age and live births in the respective year. The mortality rate is expressed per 1000 live births.

Infant mortality rate = (number of deceased children under 1 year of age / number of live births) * 1000

Additional info:



Download all database data in Excel format:

[Data](#)



DevInfo profiles:

devinfo.stat.gov.rs/SerbiaProfileLauncher/?lang=en



DevInfo online database:

devinfo.stat.gov.rs/vitalna



For additional information or questions please contact:

devinfo@stat.gov.rs